



KPMG Valuation Data Source

Relevant cost of capital parameters at a glance

A KPMG Deal Advisory Valuation product



KPMG Valuation Data Source

Relevant cost of capital parameters at a glance

The KPMG Valuation Data Source provides all important cost of capital parameters at the push of a button. In just a few steps, the exact cost of capital is derived on the basis of an individual peer group.

The features at a glance

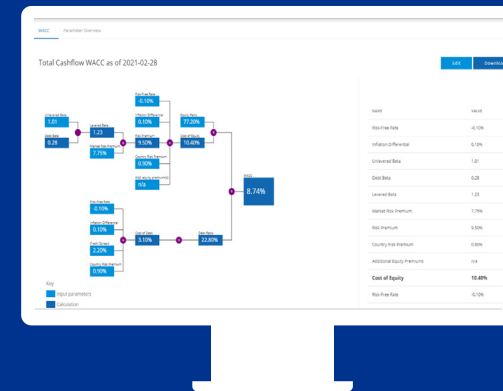


Precise cost of capital (WACC or cost of equity) at the push of a button

Analytics of individual capital market parameters in 150 countries

Immediate access to industry betas for approx. 70 sectors

Access to a monthly updated database of >17,500 companies worldwide



Request a demo now!

- ✓ Reliable data from a single source
- ✓ Updated monthly
- ✓ Available at any time
- ✓ Unlimited number of queries
- ✓ Export as MS Excel and as PDF

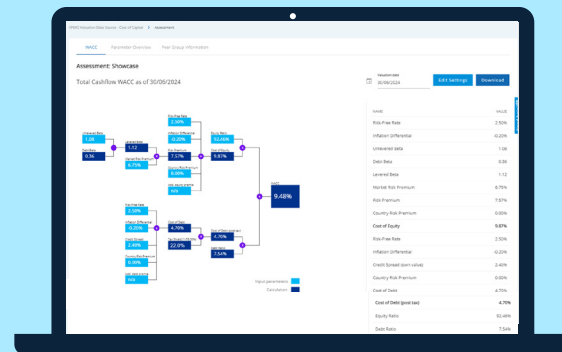
The KPMG Valuation Data Source is a suite that combines 2 apps. These enable specific, time-saving analyses.

KPMG Valuation Data Source

01

Cost of Capital (WACC) App

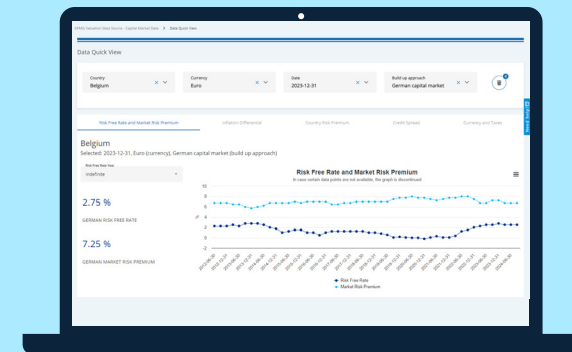
The central app to derive **cost of capital** based on an **individual peer group** that enables deep analysis of the **WACC, CoE or CoD**.



02

Capital Market Data App

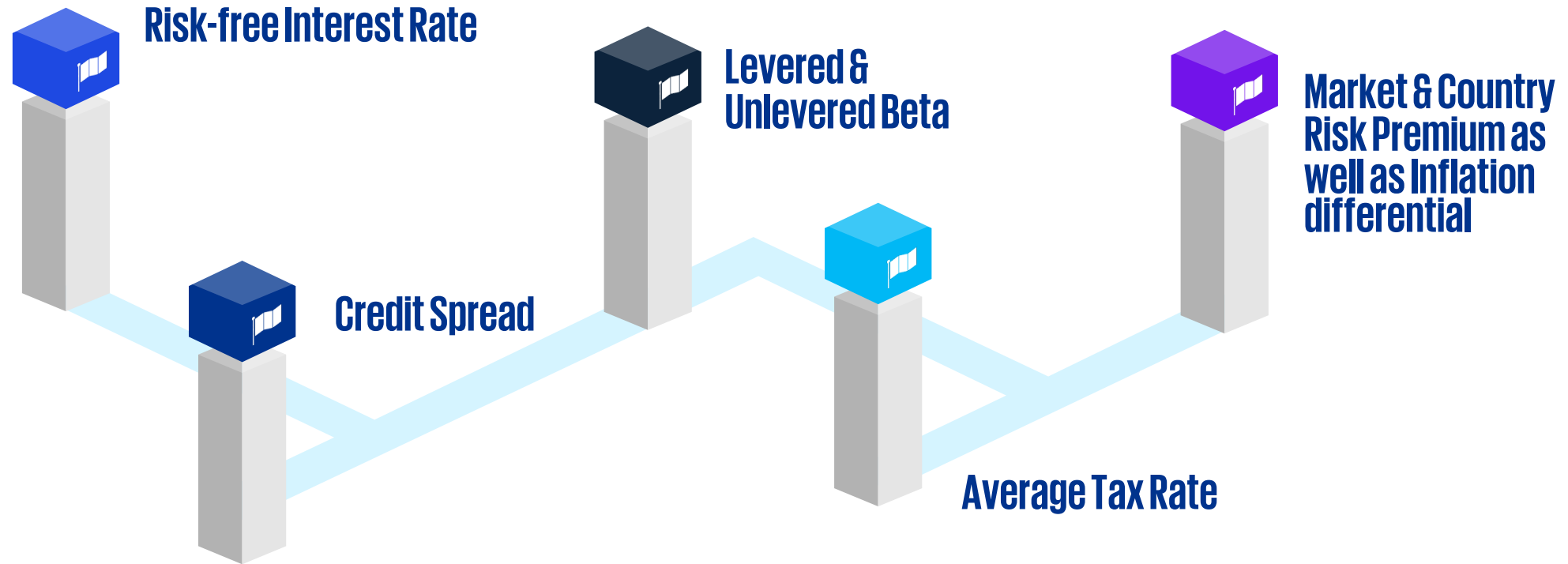
The app for **country-specific capital market parameters** for advanced analysis.



The Valuation Data Source is a suite of apps enabling both rapid and in-depth analyses. All data comes from a single source and KPMG experts ensure its reliability.

I. Cost of Capital App (WACC)

Available cost of capital parameters in the Cost of Capital (WACC) App

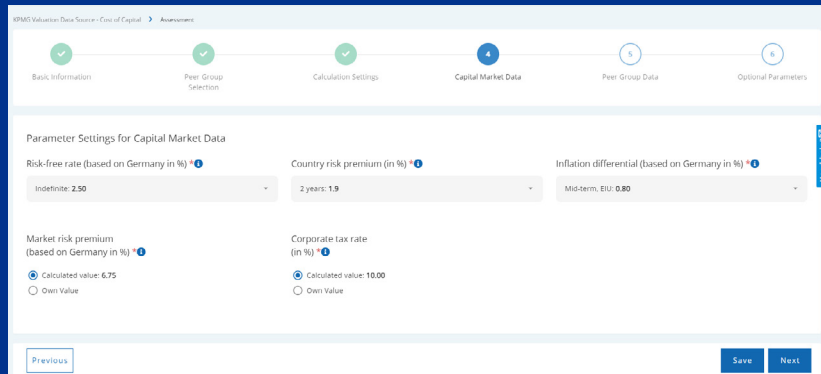


With the help of the KPMG Cost of Capital App, companies can adapt all cost of capital parameters to their own situation in order to derive a precisely tailored cost of capital.

Derive customized cost of capital in only 6 steps



Sneak peek into the tool



Full flexibility



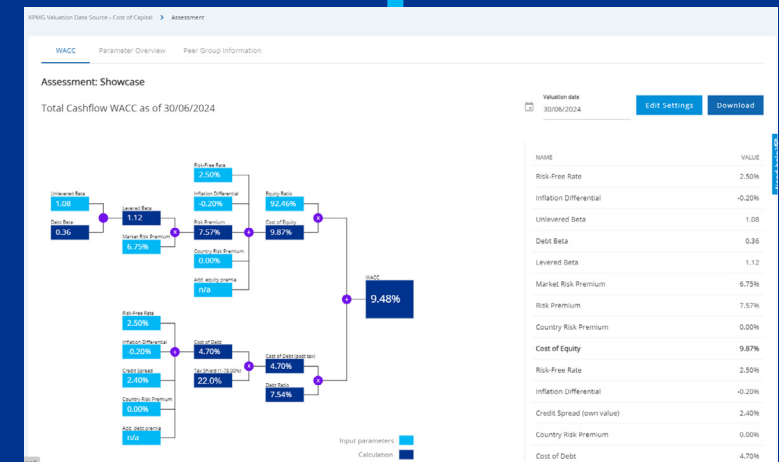
Customers can decide flexibly per parameter whether they want to use calculated data or incorporate their own values into the analysis.

Efficient Input

The app guides users in a few steps to derive the exact cost of capital. In addition to the individual peer group, the calculation and parameters as well as their settings can be adapted to each and every situation.

Transparent Result

The dashboard not only shows the final result but also all components of the WACC or cost of equity tree.

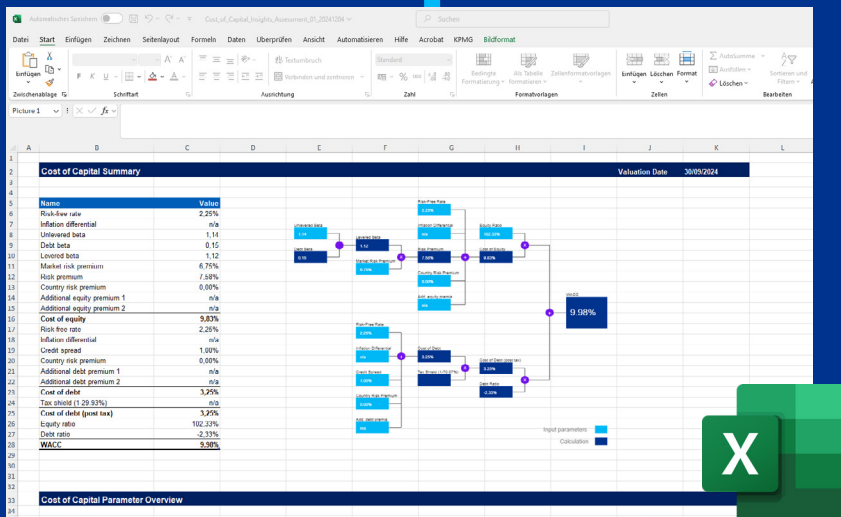
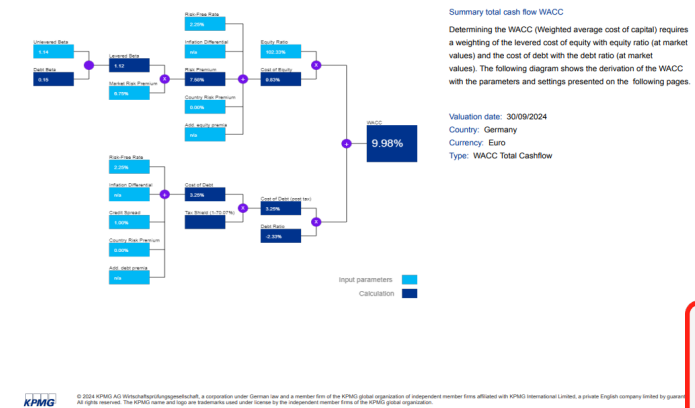


Download

PDF-Export

All data can be exported to a PDF report at the touch of a button and sent to the auditor together with the documentation.

02 Cost of capital summary

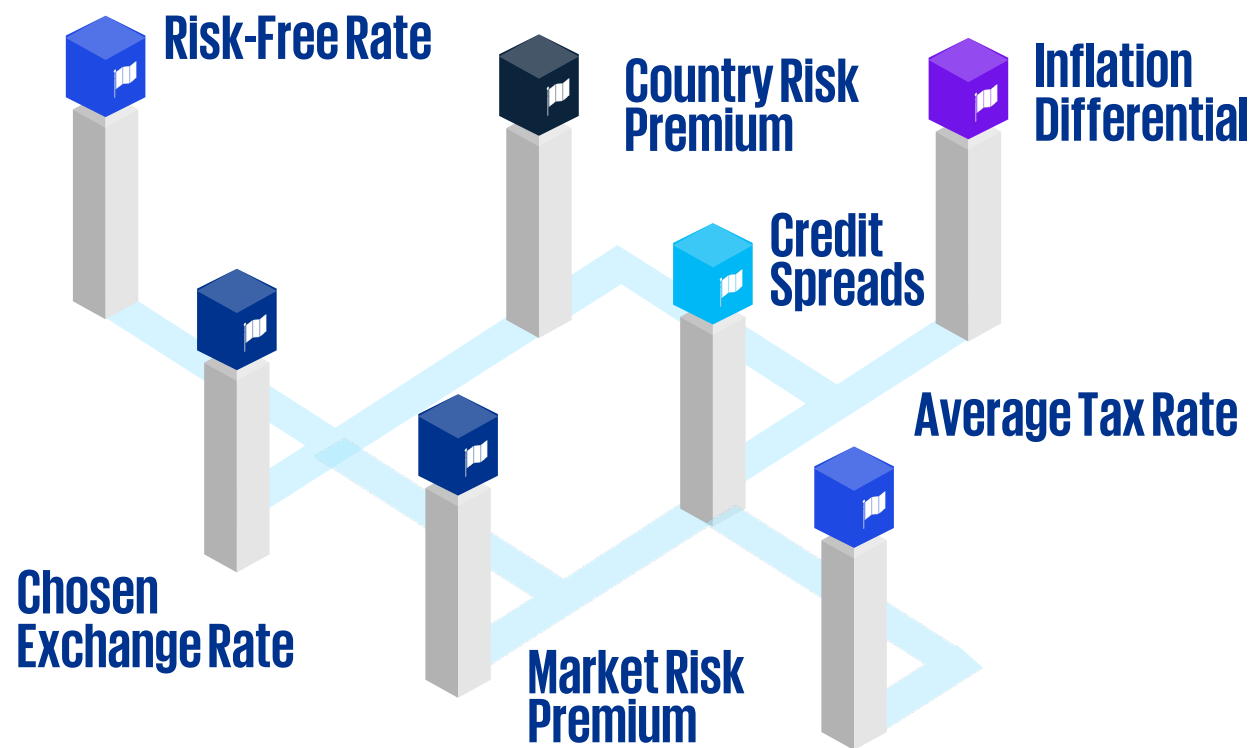


MS Excel export for further processing

For additional independent analyses, it is also possible to download all data in MS Excel format.

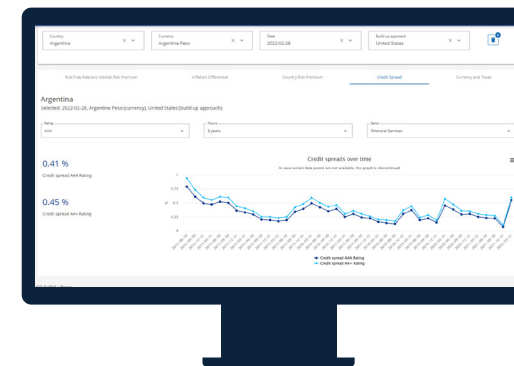
II. Capital Market Data App

Available cost of capital parameters



Areas of application & possibilities

- Deeper analysis of individual countries
- These options are available for credit spreads:
 - Selection of sector (Corporate vs. Financial Services)
 - Selection of ratings (AAA to CCC)
 - Selection of tenure (1 to 30 years)



The download function of the Capital Market Data App allows the download of all cost of capital parameters of all or selected countries. Query settings can be saved for maximum efficiency.

Available product service plans

Self Service

- Structured onboarding process with an expert
- Independent access to the tool
- Introduction to the content of the tool
- Independent input of data
- Independent analysis and creation of individual reports

Managed Service

In addition to tool access:

- Expert support for setup (esp. selection of peer group companies)
- Personal presentation & discussion of the data at a desired point in time during the year
- Standardized summary of work results (Executive Summary)

→ Only for **non-audit clients**

Tailored Service

In addition to Managed Service:

- Tailored parameter derivations or background research & special analyses (e.g. on beta factor changes, outliers or high-risk countries)
- Provision of additional data (e.g. daily liabilities, balance sheet ratios)
- Appraisal of statistical data
- Individual documentation

→ Only for **non-audit clients**

*The ideal display of the tool is via Edge or Chrome browser.

Security & Certifications



External certification

SOC3 / SOC2 / ISO27001
certification External independent
audit (BDO) Continuous internal
reviews



Architecture

Strong encryption
Isolated environments
Auto-scaling infrastructure to
ensure consistent performance
even with erratic usage patterns
Choose your data geography to
minimize latency and optimize
performance



Organization

Ring-fenced ops organization
Documented procedures
Background verification
Approvals enforced in workflow
systems



Controls

Robust control framework
in line with SOC2 and
ISO27001 standards
Controls tested multiple
times per year
Automated monitoring and
logging

Microsoft Azure Data Centres

Your contacts



Dr. Andreas Tschöpel

Partner, Deal Advisory

Valuation

KPMG AG, Berlin

+49 30 2068-1488

atschoepel@kpmg.com



Ken Arminger

Director, Deal Advisory

Digital Products & Services

KPMG AG, Hamburg

+49 40 32015-5898

karminger@kpmg.com



kpmg.de/socialmedia

kpmg.de

The information contained herein is of a general nature and is not intended to address the circumstances of any particular individual or entity. Although we endeavor to provide accurate and timely information, there can be no guarantee that such information is accurate as of the date it is received or that it will continue to be accurate in the future. No one should act on such information without appropriate professional advice after a thorough examination of the particular situation.

© 2025 KPMG AG Wirtschaftsprüfungsgesellschaft, a corporation under German law and a member firm of the KPMG global organization of independent member firms affiliated with KPMG International Limited, a private English company limited by guarantee. All rights reserved. The KPMG name and logo are trademarks used under license by the independent member firms of the KPMG global organization.

Document Classification: KPMG Public